



# DecisionPad 3

Helps organizations get decisions *made*

## Installation Guide

## *DecisionPad3 Installation Guide*

*November 24, 2008*

*© 2008 Apian Software, Inc. All Rights Reserved Worldwide.*

*Apian Software, Decision Pad®, DecisionPad and “Helps organizations get decisions made” are trademarks of Apian Software, Inc.*

*Companies, names, and data used in examples herein are fictitious unless otherwise noted. Information in this document is subject to change without notice.*

*All other product and company names mentioned herein are the trademarks of their respective owners.*

### *Disclaimer:*

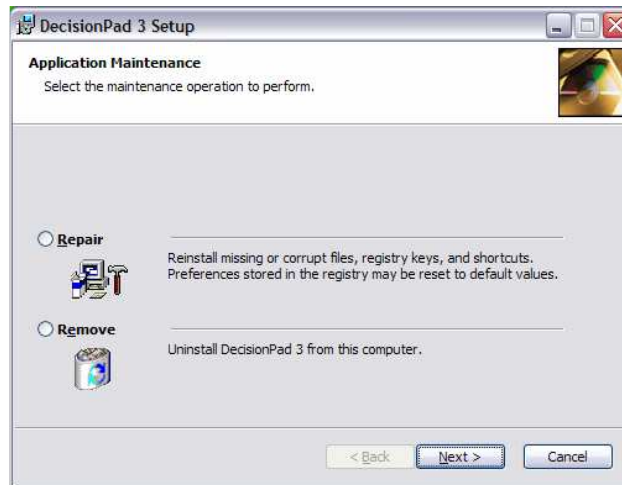
*This documentation is meant for use under an Apian DecisionPad license agreement. Use outside this agreement is not covered under any explicit or implied warranties.*

### *Contact:*

*Apian Software, Inc.  
115 N 85th Street  
Suite 204  
Seattle, WA 98103  
[www.apian.com](http://www.apian.com)*

Download and run the *InstallDecisionPad3.exe* to transfer the software and documentation to your disk.

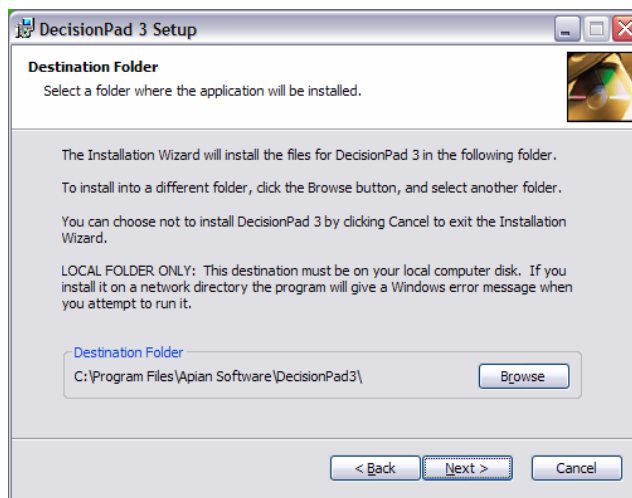
*If it finds an earlier installation, you may need to uninstall that first then restart InstallDecisionPad3.exe to install the new build. Repair does not update everything so click Remove and re-install if this screen appears:*



When there is no previous DecisionPad installation starts out like this:

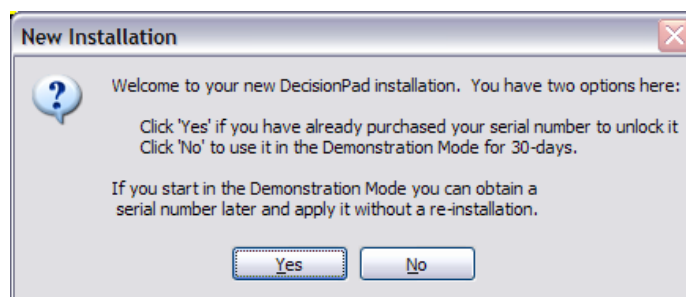


The next dialog requests where to put the software on your disk. Note that it must go on the local disk, not on a network drive (all DecisionPad licenses are for single users):

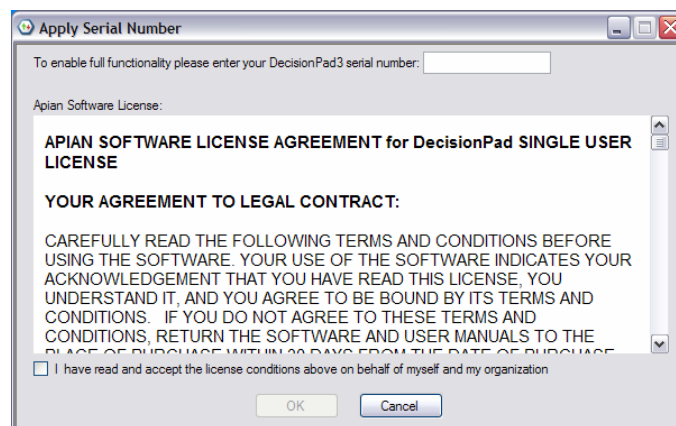


The default is in the Windows program files folder; some Vista users may have security reasons to put it in a different folder. A few status dialogs will complete the file installation.

Setup is completed when you start DecisionPad the first time, which brings up this dialog:



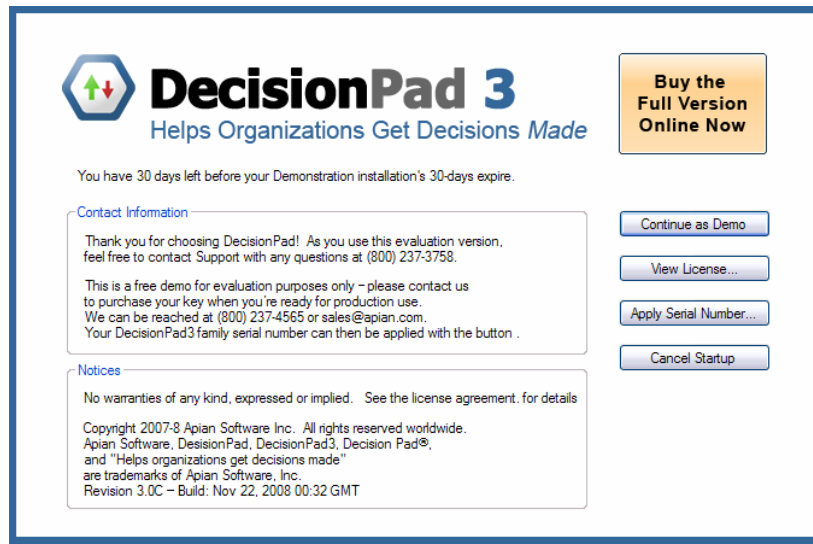
If you already have a serial number to unlock the program please click the Yes button here. That will bring up the Serial Number entry dialog:



Read the license agreement and indicate it is acceptable and click *OK* to start.

If you click the *No* button on the *New Installation* dialog DecisionPad will start in the Demonstration Mode. The demo has a few restrictions (expires in 30-days, maximum 4 alternatives and 7 criteria, and prints a demo “watermark” under all printouts). Otherwise it has

full capability for your evaluation. *Note that the Demonstration Mode is not licensed for real decisions and carries no warranties, expressed or implied.*



Click on the *Continue as Demo* button to get going. This dialog will re-appear on startup while you are in the Demonstration Mode. It will let you know how much of your 30-day evaluation period is left. When you obtain a serial number it can be entered to unlock the full feature set using the *Apply Serial Number* button.

With or without serial number, the next dialog asks how you want to begin:



For the next step refer to the Tutorial or Reference documentation. With a new installation you could open a sample file, start a blank matrix or build one with the JumpStart wizard.

Sample File:

**Tutorial-3 - DecisionPad**

Matrix | Notes | Scores | Weights | Weight Sensitivity

Rank in 3 (Previous Rank)		1	3	2
Score (Previous Scores)		?	?	?
		Central Laser	Four Lasers	15 Individual Inkjets
<b>Weights</b>				
Finance	64			
Retail Price	10	\$6,999	\$3,596	\$5,985
Financing Plans	15	Yes	Yes	No
Cost per Page - Color	29	57¢	84¢	38¢
Yearly Maintenance Fees	10	Good	Fair	Poor
Features	27			
Print Speed	20	35 ppm	25 ppm	20 ppm
Duplex Printing	7	Yes	Yes	Yes
Support and Human Factors	9			
Ease of Use	9	Hard	Average	Easy
<b>Total Weights</b>	<b>100</b>			

New blank decision:

**Untitled - DecisionPad**

Matrix | Notes | Scores | Weights | Weight Sensitivity

Rank in 0 (Previous Rank)				
Score (Previous Scores)				
		Central Laser	Four Lasers	15 Individual Inkjets
<b>Weights</b>				
<b>Total Weights</b>				

Add Alternatives  
Add Criteria

JumpStart:

**Welcome to JumpStart for DecisionPad3**

**DecisionPad Jump Start**

This wizard will help you build a decision matrix like the one shown here.

You could also do it from scratch, and probably will once you are used to the process. However JumpStart can guide you through the setup in an orderly fashion with hints and ideas along the way to jog your thinking about what the decision should be based on.

The matrix looks similar to a spreadsheet, but it goes beyond pure numbers. Many decisions involve subjective judgments and tradeoffs that need to be put on a common footing with the "hard data" for rational evaluation. DecisionPad fills the gap between a traditional spreadsheet and pure intuition, providing a logical decision structure which organizations prefer. It also organizes the documentation of the decision, preserving a paper trail for your organization.

Click Next and we will get started!

Cancel << Back Next >> Finish Help File Save

## **Build Notes**

Documentation consists of Tutorial and Reference .pdf files, with several sample files to experiment with. The Help system is not implemented in this release. It will be available to you at no additional cost when ready.

Demonstration builds will activate for 30-days, allow up to 4 alternatives and up to 7 criteria, and show a “watermark” behind printed reports and matrices.